

MODULE 12 L01

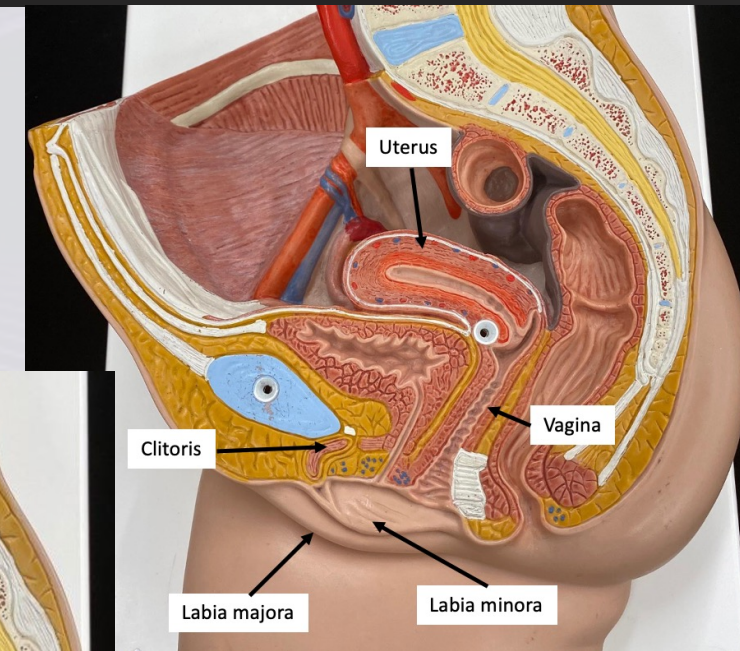
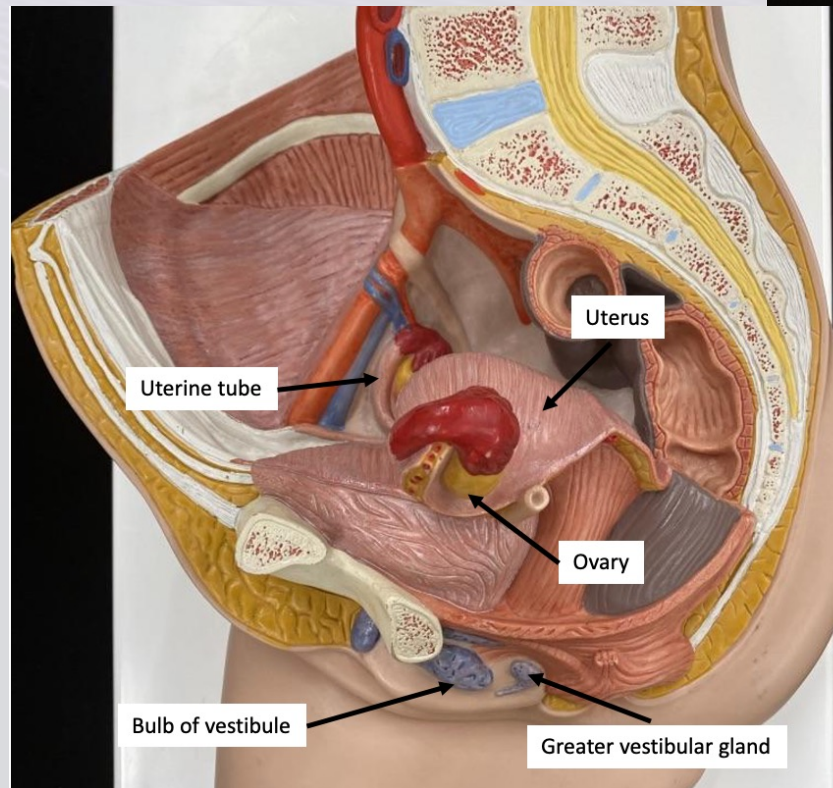
Female Reproductive System: Ovaries

Dr. Lisa Brinn
lbrinn@fiu.edu



Structures of Female Reproductive System

- Ducts
 - ❖ Uterine tube
 - Fimbriae
- Gonad
 - ❖ Ovaries
- External genitalia
 - ❖ Clitoris
 - ❖ Labia minora
 - ❖ Labia majora
 - ❖ Mons pubis
- Accessory gland
 - ❖ Greater vestibular gland
- Uterus
 - ❖ Perimetrium
 - ❖ Myometrium
 - ❖ Endometrium
 - ❖ Cervix
- Vagina
 - ❖ Fornix
 - ❖ Bulb of vestibule

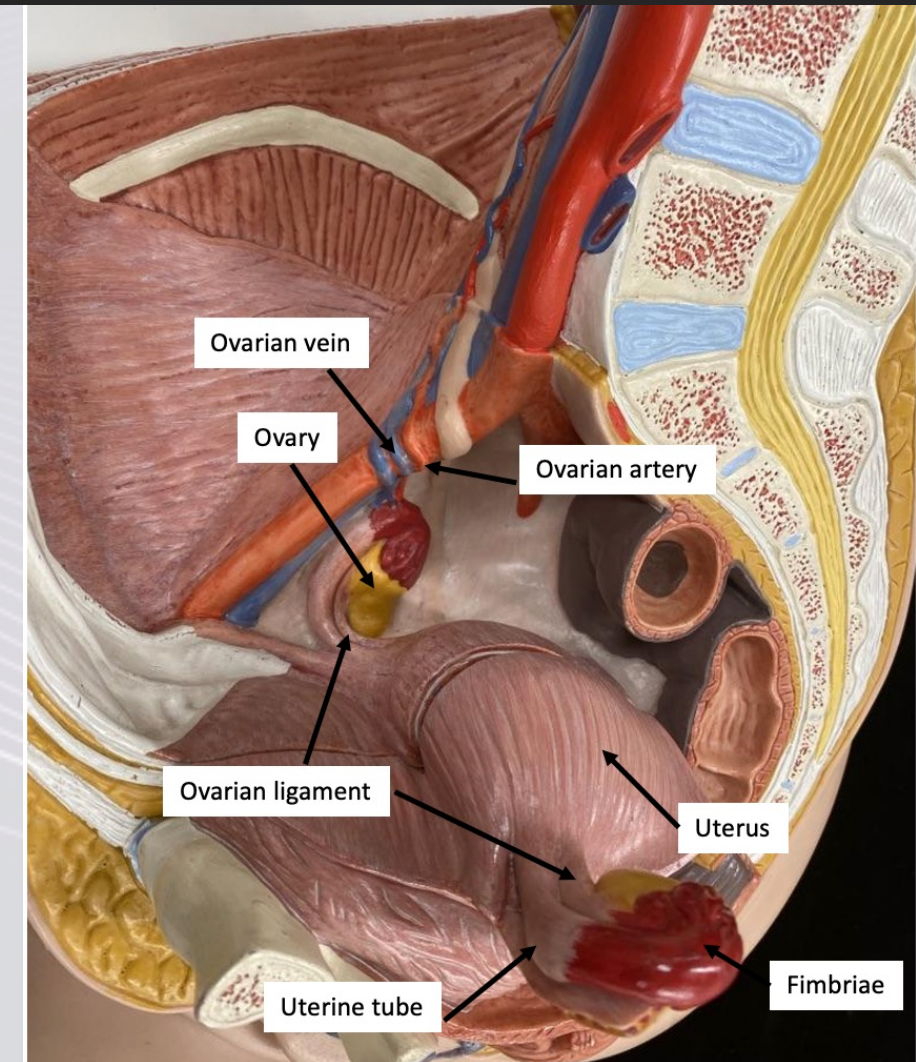
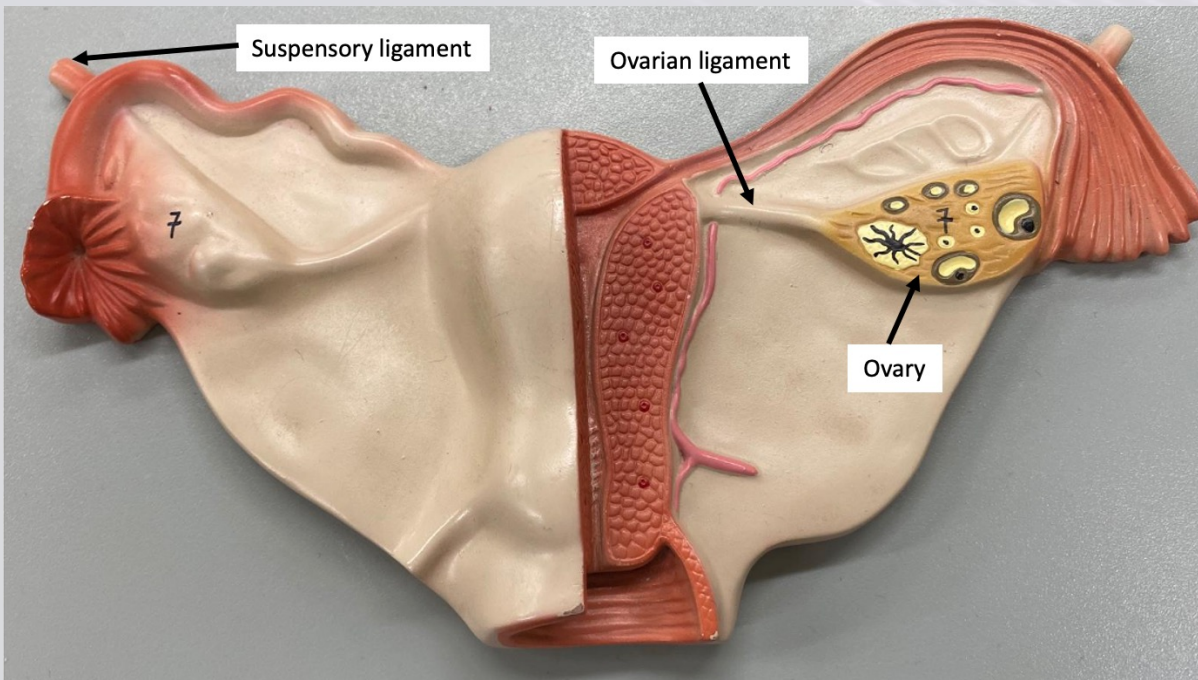


Functions of Female Reproductive System

- Functions:
 - ❖ Produces oocytes
 - ❖ Protects and supports a developing embryo and fetus
 - ❖ Nourishes a newborn infant

Ovaries

- Responsible for:
 - ❖ Producing oocytes
 - ❖ Secreting hormones
- Stabilization
 - ❖ Ovarian ligament
 - ❖ Suspensory ligament



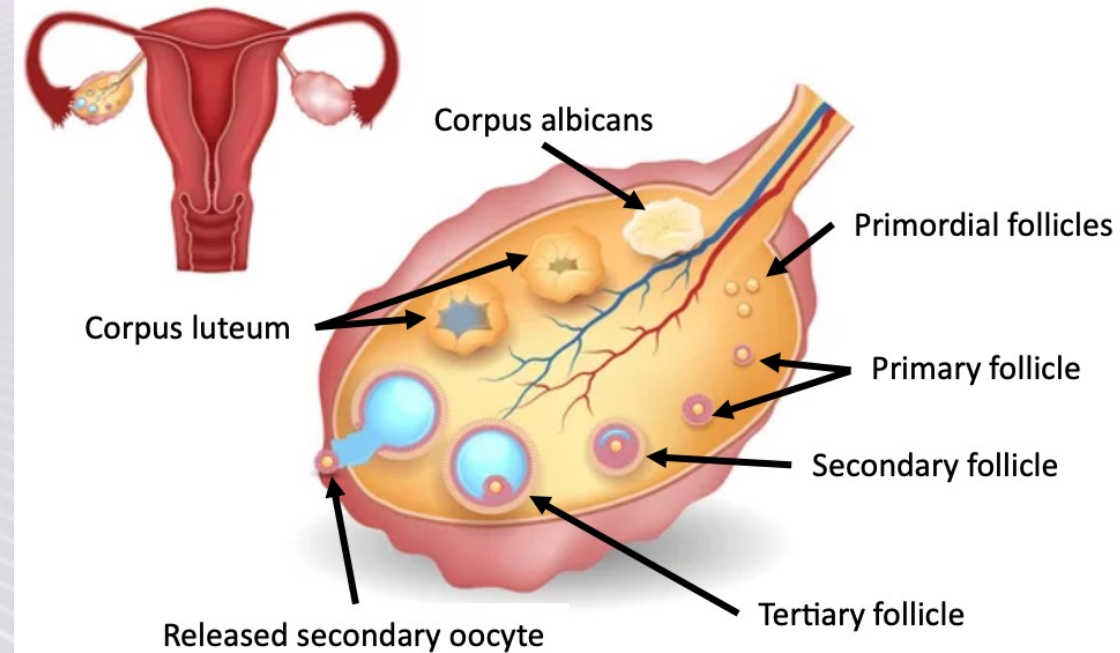
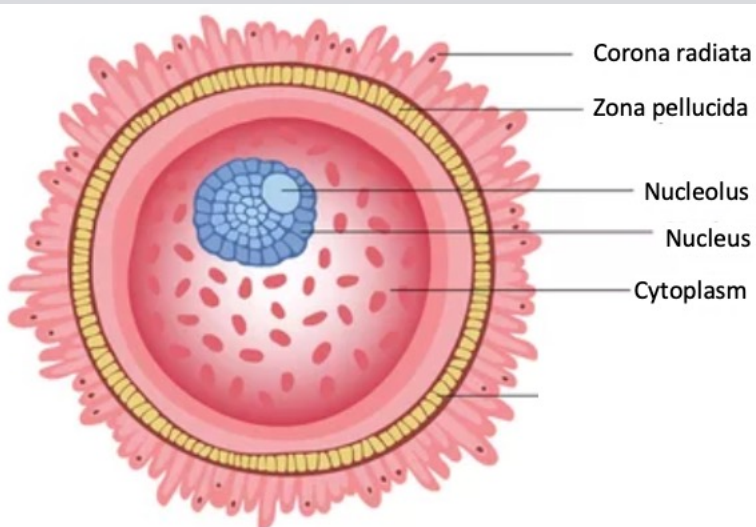
Oogenesis

- Processes female reproductive undergo to ensure species continuation
 1. Oogenesis – production of oocytes
 2. Ovarian cycle – maturation of oocyte
 3. Uterine cycle – prepares uterus for implantation of fertilized oocyte
- Oogenesis
 - ❖ Begins – before birth
 - ❖ Accelerates – at puberty
 - ↑ FSH → start of ovarian cycle
 - ❖ Ends - menopause

Follicular Development

1. Primordial ovarian follicles
2. Formation of primary ovarian follicle
 - Granulosa cells – nutrients
3. Formation of secondary ovarian follicle
4. Formation of tertiary ovarian follicle
 - Mature (Graafian) follicle
 - Granulosa cells – corona radiata
 - Thecal endocrine cells
5. Ovulation
6. Formation of corpus luteum
7. Formation of corpus albicans

} Estrogens



- Zona pellucida – outer layer formed by proteins
- Corona radiata – protective layer
- Estradiol
 - ❖ Muscle and bone growth
 - ❖ Female secondary characteristics
 - ❖ CNS activity
 - ❖ Function of glands and organs
 - ❖ Repair and growth of uterine lining

Ovarian Cycle

- Follicular phase
 - ❖ Follicular maturations
- Luteal phase
 - ❖ Corpus luteum matures and disintegrates

—————→ ovulation

